

Technical Tips for the Graphtec FC7000

How to Print and Cut Using FLEXISIGN™ 8.0 with the GRAPHTEC FC7000 Automatic Registration Mark Sensor

Prior to using FlexiSign, make sure it is installed correctly and the Graphtec FC7000 driver is selected and set to the correct port. It is also recommended to review “The Graphtec FC7000 ARMS Setup Guide When Using FlexiSign or PhotoPrint.”

This procedure was developed with the following system configuration:

- Windows XP Professional Service Pack 2
- Software: FLEXISIGN 8.0v2 build 0948

1. Open your image or Create your image: File > Open or File > New (Fig. 1)

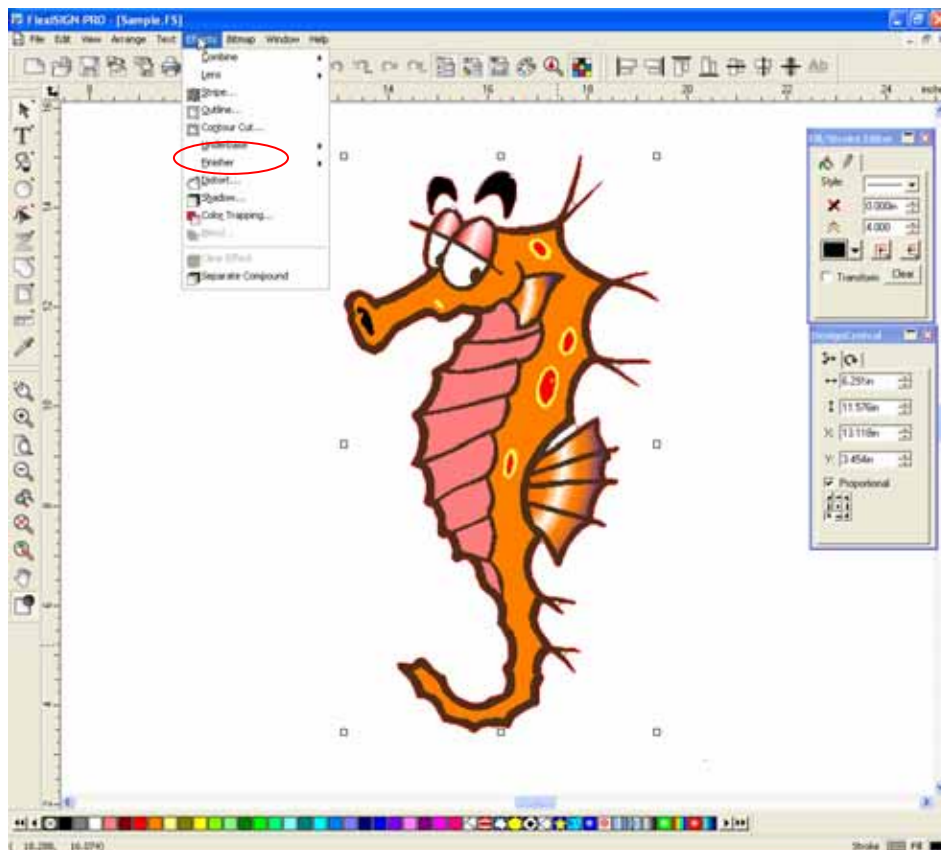


Figure 1

2. Apply Contour Cut: Effects > Contour Cut (Fig.2)

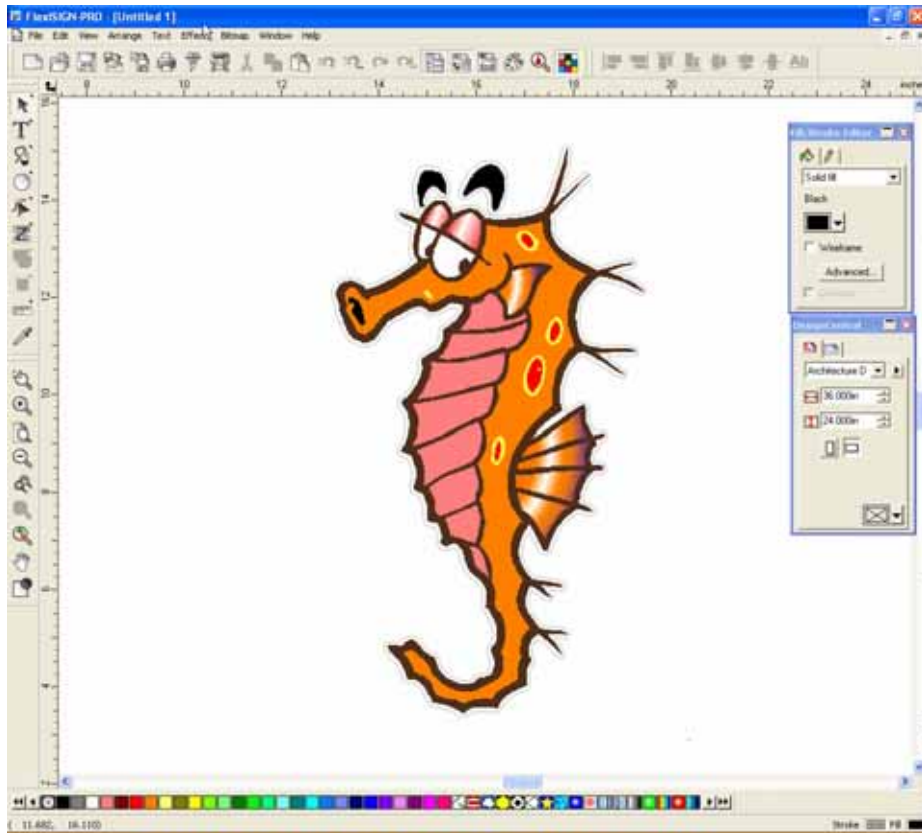


Figure 2

3. Select RIP AND PRINT Dialogue: File > RIP & Print or Click on the Icon shown in Fig 3.

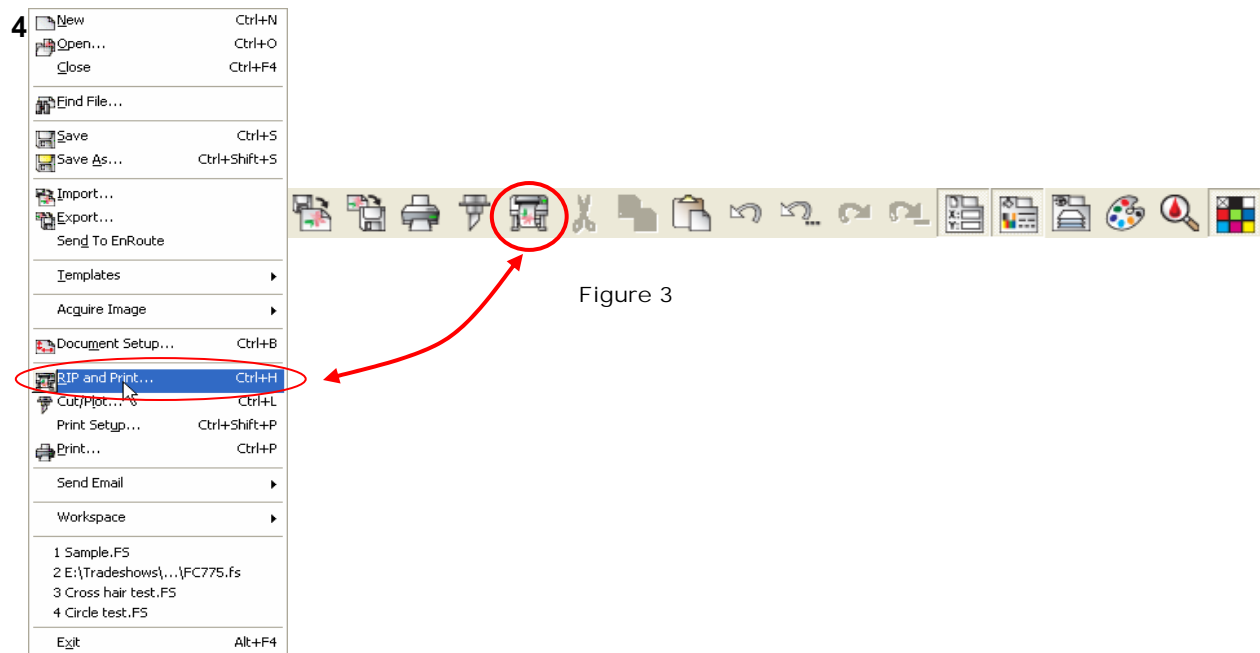


Figure 3

When the RIP AND PRINT dialog box appears (see Figure 4), click on the ADVANCED tab.

5. Click the CONTOUR button and select a cutter.
6. Select type of marks: Choose **GRAPHTEC TYPE 2 AUTOMATIC**
7. Click DONE on the Contour Options dialog box and then Click SEND at the bottom of the RIP AND PRINT dialog box.

Clicking "Send" will separately send the files to be RIPped and Printed, plus it will send the CUT job to be placed on Hold until you are ready to have it cut on the FC7000 cutter

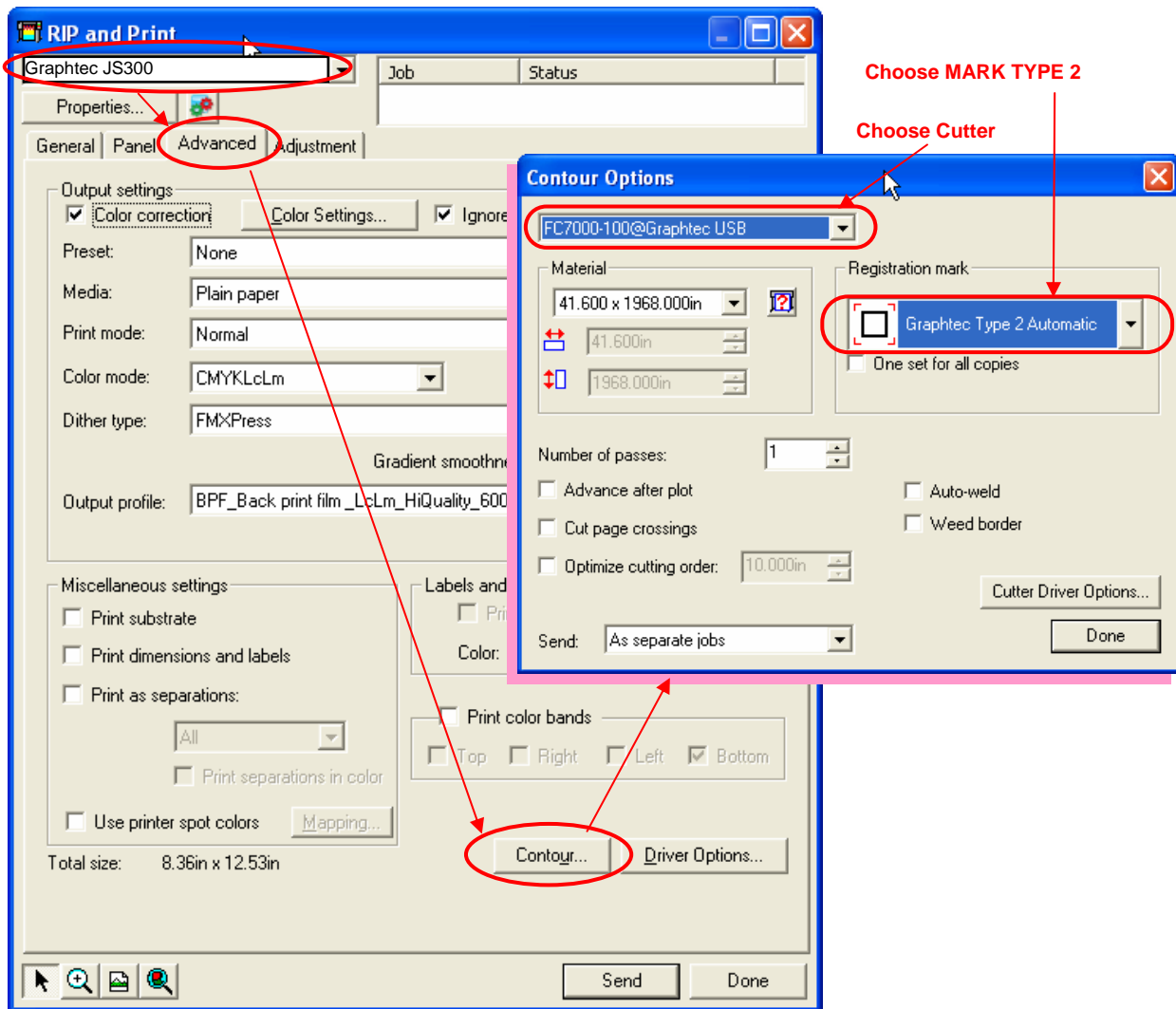
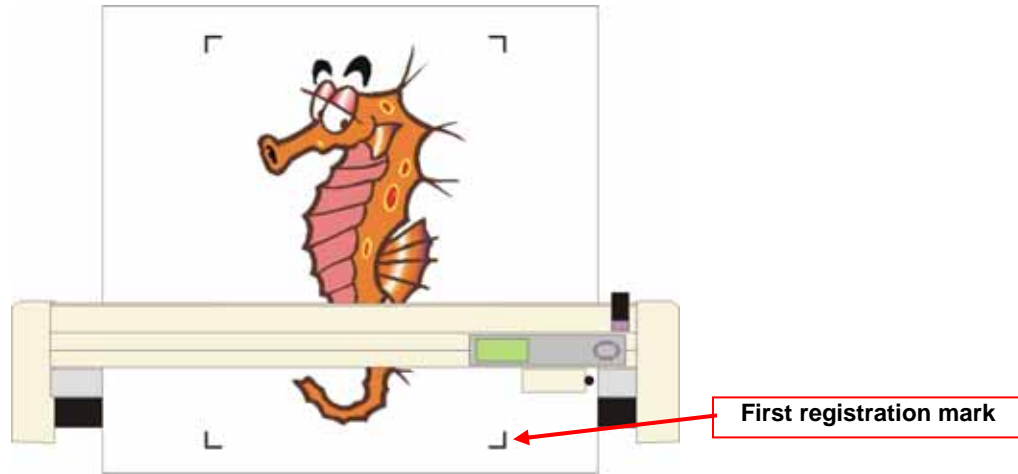


Figure 4

8. After printing is complete, place the print on the FC7000.

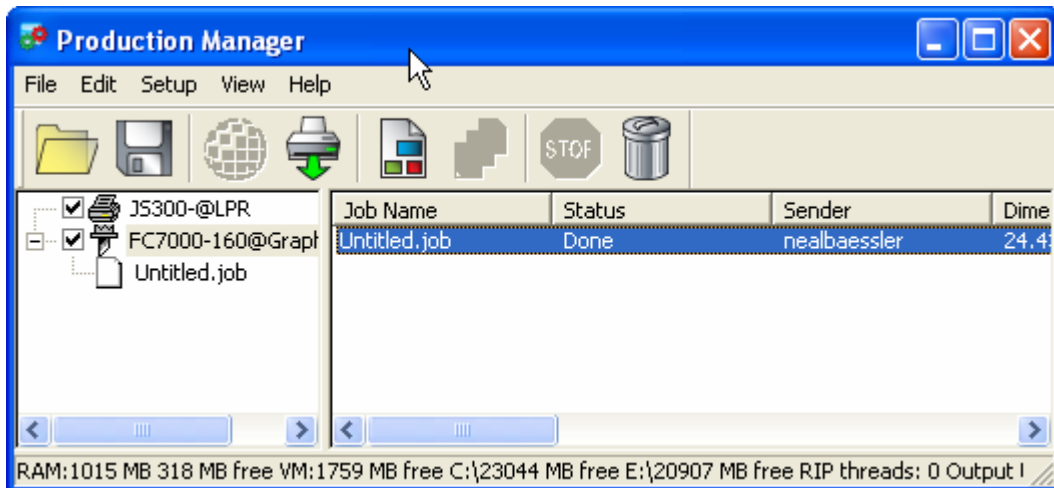


Tip: When loading the media, place both index fingers on the two front registration marks. As you position the media, feel for the cross cut channel and position both registration marks over the channel. This will help you to align the print so the back registration marks can be located and not missed due to a slight angle of the image.

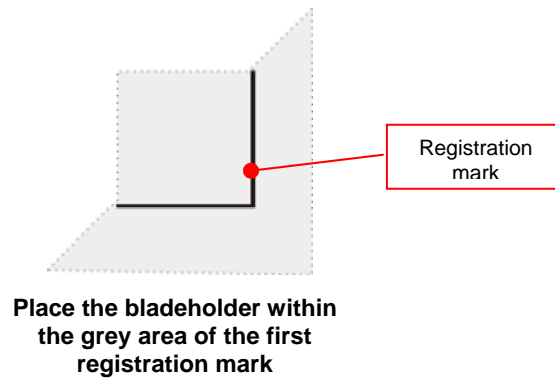
Tip: For better results, and to ensure that the registration mark optical sensor can locate the registration marks, try to have a margin of at least ¼" between the marks and the pinch roller wheels.

9. Latch the media and press REAR LOAD ROLL-2

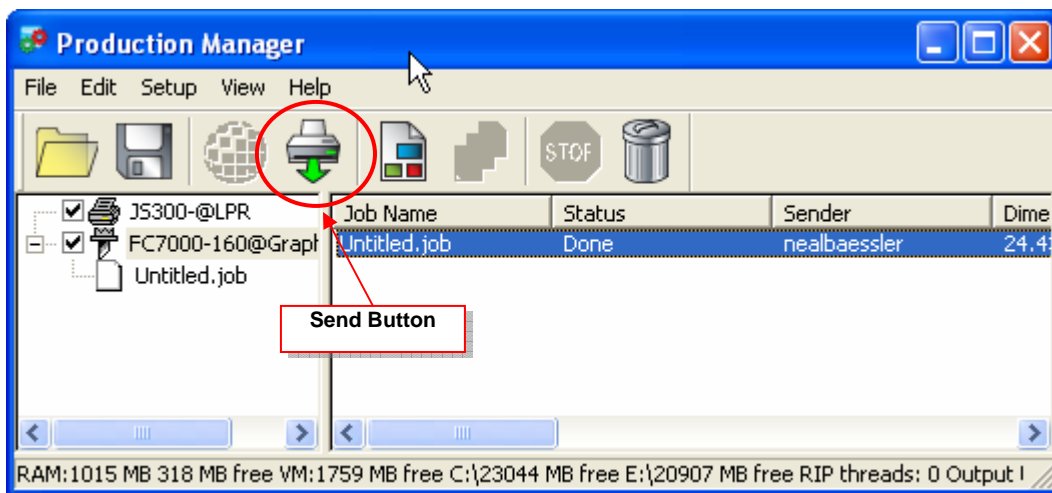
10. In the RIP AND PRINT dialog box click on the PRODUCTION MANAGER  icon button



11. Using the arrow keys, position the BLADEHOLDER over or near the first registration mark (See diagram below.)



12. In Production Manager, click on the “FC7000” driver you are using.



13. Select the contour cut job and then click the SEND button



14. The message box above will pop up. Click OK.

15. The plotter will scan the print for the four marks and then cut around the design.